

NB Apartments have underfloor heating elements throughout set at bottom of 75mm screed. On No account use fixings that will penetrate more than 50mm into the floor.

Remove existing HWC and replace with 330 litre with all necessary plumbing and making good

Electrical work by Lion Barn
To include a heat detector in the new kitchen and a sounder in Bedroom 3 both linked to detector/sounder to retained hallway

Existing kitchens removed by kitchen supplier

Block up rear of air brck for removed kitchen

Remove glass terrace division

Party wall partly demolished with new steel structural support including steelwork in inner leaf to engineers details. Make good floor and level between flats with latex

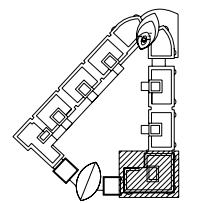
Retain extg electrical board and provide new partition to form back of kitchen units as shown. Provide 30min FR access door above worktop level

New kitchen subject to final design by kitchen installer. Provide new extract duct to outside for hood with Y branch to connect to to both extg air brcks

Remove walls to old entrance hall, WC and HWC cup'd and MG. remove existing front door and lining and infill with party wall blocks. Remove timber partition base set in screed and MG floors

New partition wall of 12.5mm plasterboard and skim both sides of 70mm meat studs

Strp back extg mains cold water to flat with new stopcock above ceiling in position to be agreed. Take new supplies to kitchen and en suite to Bed 3
Run hot water supplies from new HWC to kitchen & ensuite to bed 3



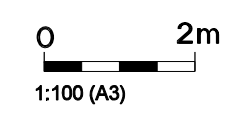
FOR WORKS TO CEILING SEE DWG 105

Signage on wall in 25mm high lettering
G4 side:
Fire Escape from adjoining apartment
Keep clear at all times
G2 side:
Fire escape to adjoining terrace.
Keep clear at all times

Remove existing terrace divider and replace with new hinged frosted glass divider as means of escape to terrace of No G4.

**THE BELVEDERE HOMERTON STREET
ALTERATIONS TO APTS 62 & 63
BLOCK D FOURTH FLOOR**

PROPOSED PLAN



MLG
ML Consultants
mliverman@gmail.com
0777 613 7919
0124/C/100